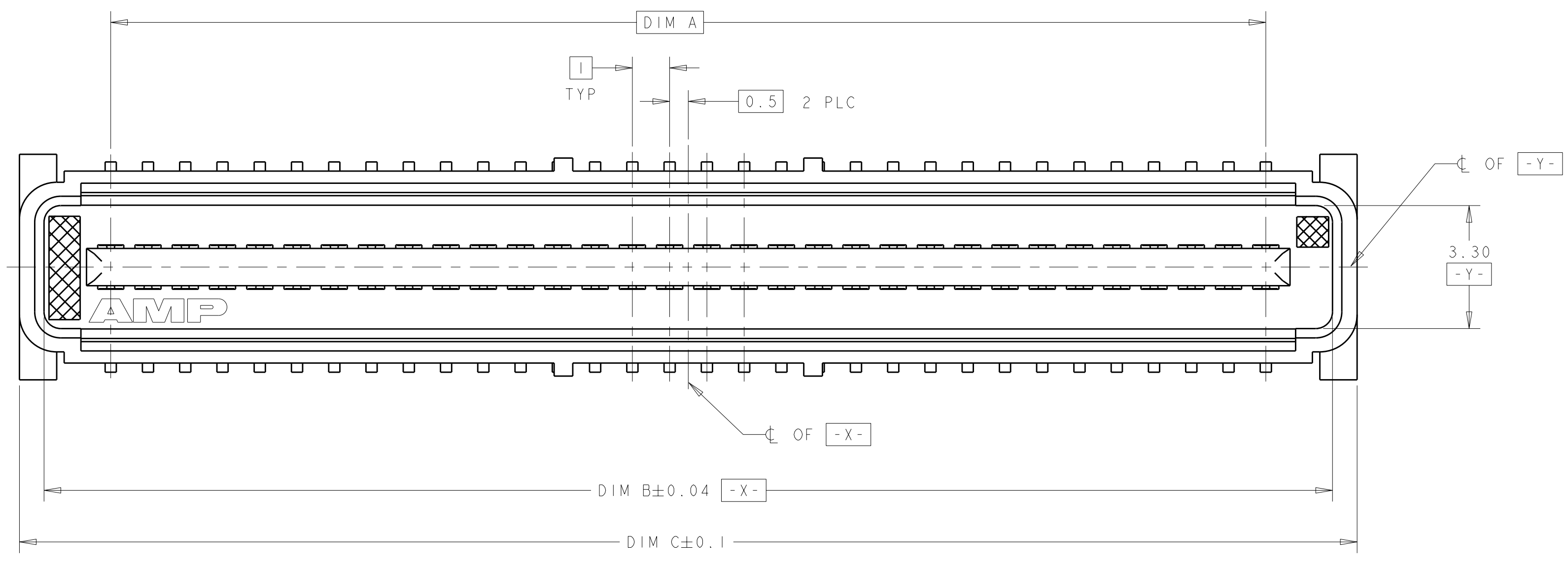
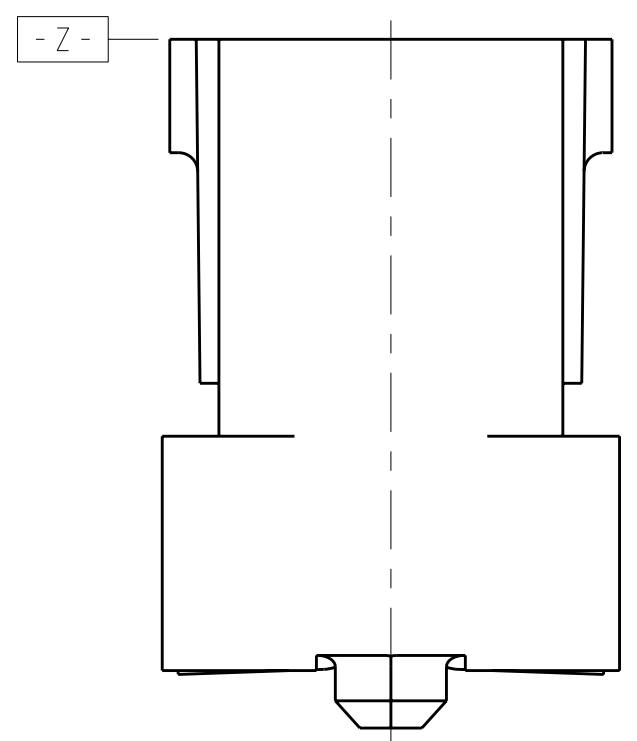
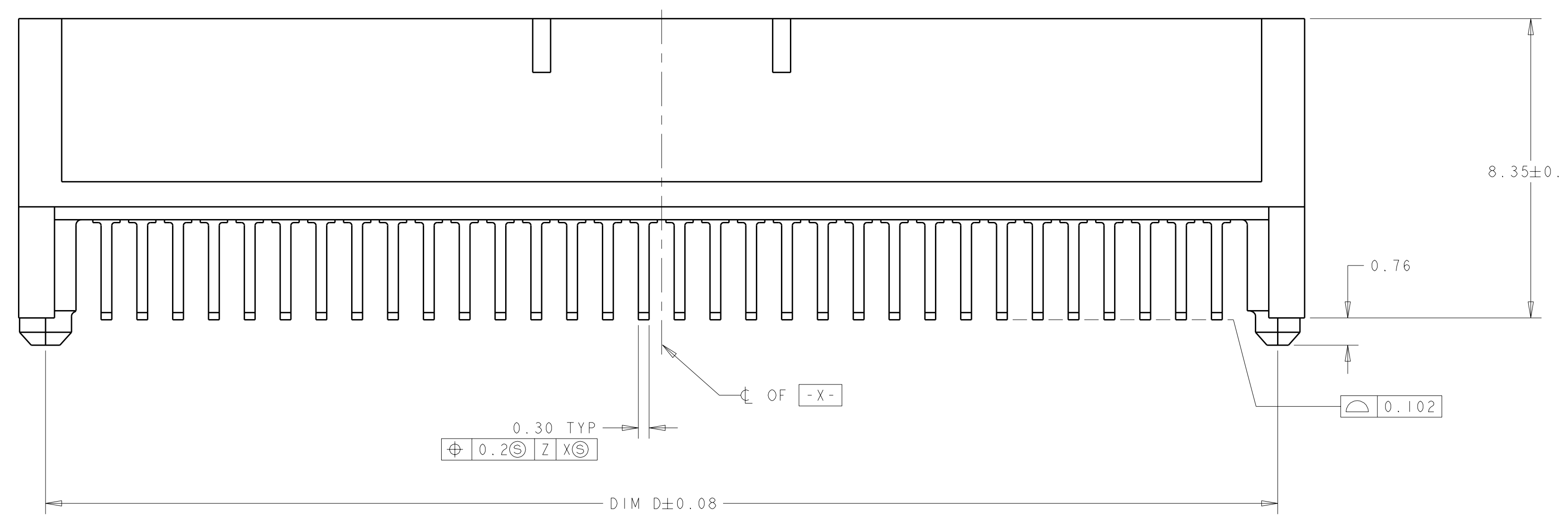


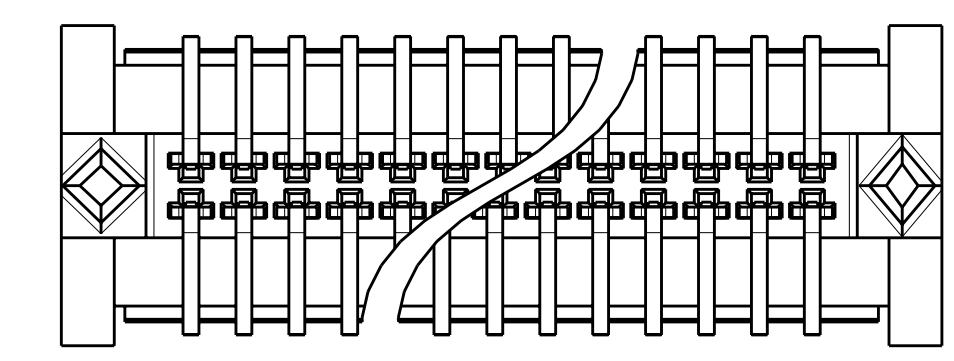
| LOC |    | DIST |     | REVISIONS                 |           |     |      |
|-----|----|------|-----|---------------------------|-----------|-----|------|
| AD  | 00 | P    | LTR | DESCRIPTION               | DATE      | DWN | APVD |
|     |    | A2   |     | REVISED PER ECO-11-004835 | 11MAR2011 | RK  | HMR  |



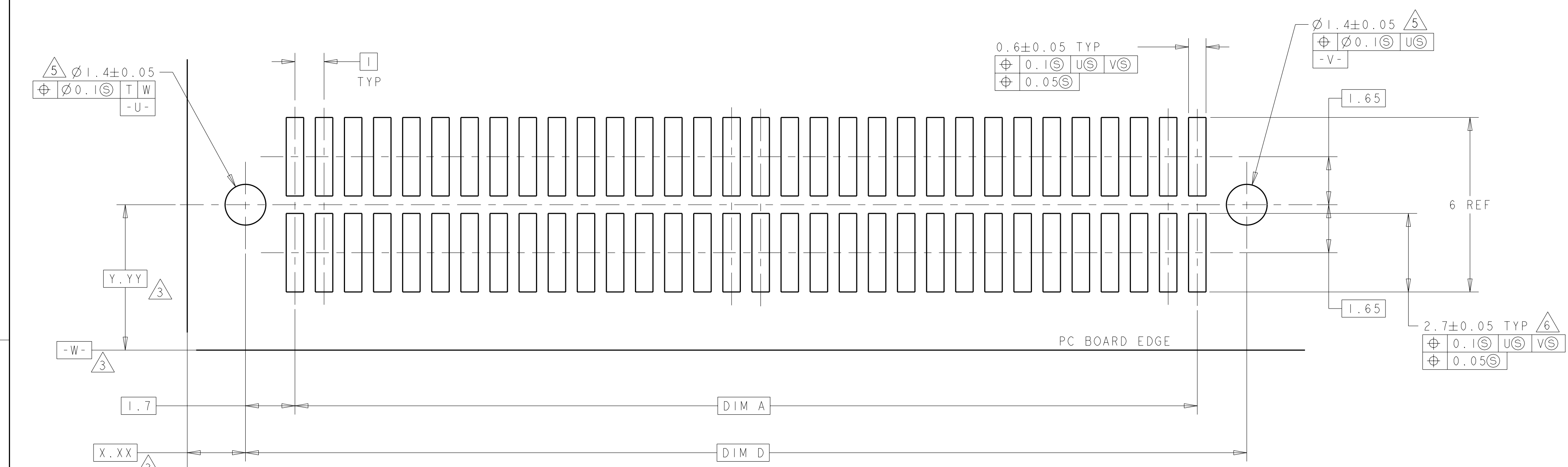
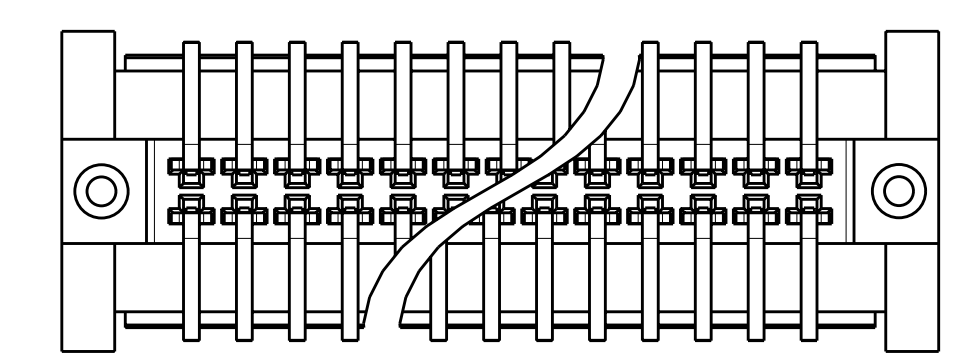
- ① HOUSING MATERIAL: LIQUID CRYSTAL POLYMER. COLOR; BLACK. CONTACT MATERIAL: PHOSPHOR BRONZE.
- ② CONTACT FINISH: NICKEL UNDERPLATE ALL OVER. MATING SURFACES PLATED TO MEET PLI PERFORMANCE REQUIREMENTS OF INDUSTRY SPECIFICATION EIA-700AAAB, SOLDER TAILS PLATED TIN.
- ③ DATUM LOCATIONS AND BASIC DIMENSIONS TO BE ESTABLISHED BY THE CUSTOMER. CONSULT AMP ENGINEERING WHEN PLACING MULTIPLE CONNECTORS ON A PC BOARD.
- ④ PACKAGED IN TAPE ON REELS PER EIA-841.
- ⑤ 1.5 MIN DIAMETER HOLE SHOULD BE USED IF USING POST STYLE "A" AND PLACING ON PCB WITH VACUUM PLACEMENT EQUIPMENT.
- ⑥ SHORTER SOLDER LANDS MAY BE USED PER EIA 700AAAB, HOWEVER 2.7 LENGTH ASSURES OPTIMUM SOLDER FILLET.
- ⑦ CONTACT FINISH: 0.00381 MINIMUM MATTE TIN PER ASTM B 545 ON SOLDER AREA, 0.00127 MINIMUM GOLD PER ASTM B 488 ON MATING AREA, BOTH OVER 0.00127 MINIMUM NICKEL PER SAE-AMS-QQ-N-290 ON ENTIRE CONTACT.
- ⑧ SQUARE AND DIAMOND SHAPED POSTS
- ⑨ ROUND SHAPED POSTS



⑧ STYLE A POSTS



⑨ STYLE B POSTS



RECOMMENDED PC BOARD LAYOUT

| POST STYLE | FINISH | DIM D | DIM C | DIM B | DIM A | STACK HGTS     | POS | PART NO     |
|------------|--------|-------|-------|-------|-------|----------------|-----|-------------|
| ⑨          | ⑦      | 44.4  | 45.9  | 44.58 | 41    | 10, 12, 13, 15 | 84  | 3-5120527-2 |
| ⑨          | ⑦      | 34.4  | 35.9  | 34.58 | 31    | 10, 12, 13, 15 | 64  | 3-5120527-1 |
| ⑨          | ②      | 44.4  | 45.9  | 44.58 | 41    | 10, 12, 13, 15 | 84  | 2-5120527-2 |
| ⑨          | ②      | 34.4  | 35.9  | 34.58 | 31    | 10, 12, 13, 15 | 64  | 2-5120527-1 |
| ⑧          | ⑦      | 44.4  | 45.9  | 44.58 | 41    | 10, 12, 13, 15 | 84  | 1-5120527-2 |
| ⑧          | ⑦      | 34.4  | 35.9  | 34.58 | 31    | 10, 12, 13, 15 | 64  | 1-5120527-1 |
| ⑧          | ②      | 44.4  | 45.9  | 44.58 | 41    | 10, 12, 13, 15 | 84  | 5120527-2   |
| ⑧          | ②      | 34.4  | 35.9  | 34.58 | 31    | 10, 12, 13, 15 | 64  | 5120527-1   |

THIS DRAWING IS A CONTROLLED DOCUMENT.

DIMENSIONS: mm

TOLERANCES UNLESS OTHERWISE SPECIFIED:

|        |        |
|--------|--------|
| 9 PLC  | ±      |
| 1 PLC  | ±0.03  |
| 2 PLC  | ±0.03  |
| 3 PLC  | ±0.03  |
| 4 PLC  | ±      |
| ANGLES | +0°30' |

MATERIAL: SEE TABLE

FINISH: SEE TABLE

THIS DRAWING IS A CONTROLLED DOCUMENT. DWN: B. CARBO, CHK: R. WERTZ, APVD: R. WERTZ. 30SEP04

NAME: PLUG ASSY, 1.0mm FH(IEEE 1386) CONNECTOR

PRODUCT SPEC: 502-1079

APPLICATION SPEC: 114-25045

WEIGHT: -

SCALE: 10:1

SHEET 1 OF 1

REV A2